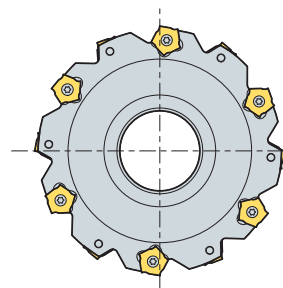
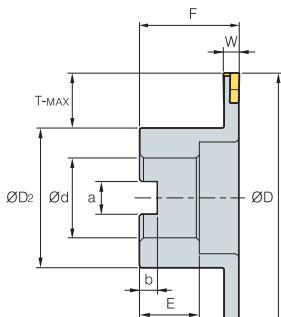
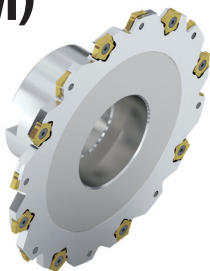


SPB(M)



•AR: -2°
•RR: 28°

(mm)

Designation	ØD	W	T-MAX	ØD ₂	Ød	a	b	F	E	Insert	Screw	Wrench	
SPB (SPBM)	080-04R/L	8	80	4	18	40	25.4 (27)	9.5 (12.4)	6 (7)	50	25 (22)	PNEJ1223N PTMA0403F TW15S	
	080-05R/L	8	80	5	18	40	25.4 (27)	9.5 (12.4)	6 (7)	50	25 (22)	PNEJ1230N PTMA0404F TW15S	
	080-06R/L	8	80	6	18	40	25.4 (27)	9.5 (12.4)	6 (7)	50	25 (22)	PNEJ1235N PTMA0405F TW15S	
	100-04R/L	10	100	4	21	54	31.75 (32)	12.7 (14.4)	8 (8)	50	32 (28)	PNEJ1223N PTMA0403F TW15S	
	100-05R/L	10	100	5	21	54	31.75 (32)	12.7 (14.4)	8 (8)	50	32 (28)	PNEJ1230N PTMA0404F TW15S	
	100-06R/L	10	100	6	21	54	31.75 (32)	12.7 (14.4)	8 (8)	50	32 (28)	PNEJ1235N PTMA0405F TW15S	
	100-07R/L	10	100	7	21	54	31.75 (32)	12.7 (14.4)	8 (8)	50	32 (28)	PNEJ1240N PTMA0406F TW15S	
	100-08R/L	10	100	8	21	54	31.75 (32)	12.7 (14.4)	8 (8)	50	32 (28)	PNEJ1245N PTMA0407F TW15S	
	100-09R/L	10	100	9	21	54	31.75 (32)	12.7 (14.4)	8 (8)	50	32 (28)	PNEJ1250N PTMA0408F TW15S	
	100-10R/L	10	100	10	21	54	31.75 (32)	12.7 (14.4)	8 (8)	50	32 (28)	PNEJ1255N PTMA0409F TW15S	
	125-04R/L	12	125	4	25	70	38.1 (40)	15.9 (16.4)	10 (9)	60 (50)	38 (30)	PNEJ1223N PTMA0403F TW15S	
	125-05R/L	12	125	5	25	70	38.1 (40)	15.9 (16.4)	10 (9)	60 (50)	38 (30)	PNEJ1230N PTMA0404F TW15S	
	125-06R/L	12	125	6	25	70	38.1 (40)	15.9 (16.4)	10 (9)	60 (50)	38 (30)	PNEJ1235N PTMA0405F TW15S	
	125-07R/L	12	125	7	25	70	38.1 (40)	15.9 (16.4)	10 (9)	60 (50)	38 (30)	PNEJ1240N PTMA0406F TW15S	
	125-08R/L	12	125	8	25	70	38.1 (40)	15.9 (16.4)	10 (9)	60 (50)	38 (30)	PNEJ1245N PTKA0407F TW15S	
	125-09R/L	12	125	9	25	70	38.1 (40)	15.9 (16.4)	10 (9)	60 (50)	38 (30)	PNEJ1250N PTKA0408F TW15S	
	125-10R/L	12	125	10	25	70	38.1 (40)	15.9 (16.4)	10 (9)	60 (50)	38 (30)	PNEJ1255N PTKA0409F TW15S	
	160-04R/L	16	160	4	43	70	38.1 (40)	15.9 (16.4)	10 (9)	60 (50)	38 (30)	PNEJ1223N PTMA0403F TW15S	
	160-05R/L	16	160	5	43	70	38.1 (40)	15.9 (16.4)	10 (9)	60 (50)	38 (30)	PNEJ1230N PTMA0404F TW15S	
	160-06R/L	16	160	6	43	70	38.1 (40)	15.9 (16.4)	10 (9)	60 (50)	38 (30)	PNEJ1235N PTMA0405F TW15S	
	160-07R/L	16	160	7	43	70	38.1 (40)	15.9 (16.4)	10 (9)	60 (50)	38 (30)	PNEJ1240N PTMA0406F TW15S	
	160-08R/L	16	160	8	43	70	38.1 (40)	15.9 (16.4)	10 (9)	60 (50)	38 (30)	PNEJ1245N PTKA0407F TW15S	
	160-09R/L	16	160	9	43	70	38.1 (40)	15.9 (16.4)	10 (9)	60 (50)	38 (30)	PNEJ1250N PTKA0408F TW15S	
	160-10R/L	16	160	10	43	70	38.1 (40)	15.9 (16.4)	10 (9)	60 (50)	38 (30)	PNEJ1255N PTKA0409F TW15S	
	160-11R/L	16	160	11	43	70	38.1 (40)	15.9 (16.4)	10 (9)	60 (50)	38 (30)	PNEJ1260N PTKA0410F TW15S	
	160-12R/L	16	160	12	43	70	38.1 (40)	15.9 (16.4)	10 (9)	60 (50)	38 (30)	PNEJ1265N PTKA0411F TW15S	
	160-13R/L	16	160	13	43	70	38.1 (40)	15.9 (16.4)	10 (9)	60 (50)	38 (30)	PNEJ1270N PTKA0412F TW15S	
	160-14R/L	16	160	14	43	70	38.1 (40)	15.9 (16.4)	10 (9)	60 (50)	38 (30)	PNEJ1275N PTKA0413F TW15S	
		200-06R/L	18	200	6	53	90	50.8 (40)	19 (16.4)	11 (9)	65	38 (30)	PNEJ1235N PTMA0405F TW15S
		200-07R/L	18	200	7	53	90	50.8 (40)	19 (16.4)	11 (9)	65	38 (30)	PNEJ1240N PTMA0406F TW15S
200-08R/L		18	200	8	53	90	50.8 (40)	19 (16.4)	11 (9)	65	38 (30)	PNEJ1245N PTKA0407F TW15S	
200-09R/L		18	200	9	53	90	50.8 (40)	19 (16.4)	11 (9)	65	38 (30)	PNEJ1250N PTKA0408F TW15S	
200-10R/L		18	200	10	53	90	50.8 (40)	19 (16.4)	11 (9)	65	38 (30)	PNEJ1255N PTKA0409F TW15S	
200-11R/L		18	200	11	53	90	50.8 (40)	19 (16.4)	11 (9)	65	38 (30)	PNEJ1260N PTKA0410F TW15S	
200-12R/L		18	200	12	53	90	50.8 (40)	19 (16.4)	11 (9)	65	38 (30)	PNEJ1265N PTKA0411F TW15S	
200-13R/L		18	200	13	53	90	50.8 (40)	19 (16.4)	11 (9)	65	38 (30)	PNEJ1270N PTKA0412F TW15S	
200-14R/L		18	200	14	53	90	50.8 (40)	19 (16.4)	11 (9)	65	38 (30)	PNEJ1275N PTKA0413F TW15S	

() Metric size

Notice (When mounting inserts)

- Insert chip breaker should face chip pocket of the cutter
- Fasten screw after insert contacts securely on its seat
- If there is a gap between insert and its seat after mounting it may cause tool troubles

Recommended cutting condition

Workpiece	Cutting condition		Grades
	vc (m/min)	fz (mm/t)	
P	190~310	0.10~0.25	NCM325 PC3700 ST30A
	160~270	0.10~0.30	
	60~100	0.10~0.25	
M	90~150	0.10~0.25	PC9530 ST30A
	80~150	0.10~0.30	
K	140~230	0.10~0.35	PC6510 G10
		0.10~0.40	

Available inserts **E15** Available arbors and bolt **E400~E402**

